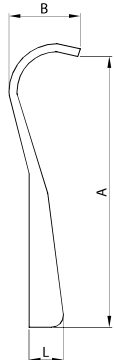


CHIAVE PER RACCORDI
SPANNER FOR NUTS
CLE À RACCORDS
LLAVE RACOR

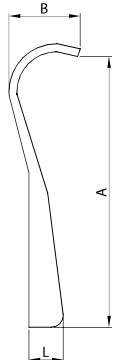
950 DS



DN	A	B	L	gr
28	255,0	55,0	25,0	330
34	255,0	55,0	25,0	330
40	255,0	55,0	25,0	330
52	255,0	55,0	25,0	330
70	255,0	55,0	25,0	330
85	255,0	55,0	25,0	330
101	255,0	55,0	25,0	330

CHIAVE PER RACCORDI
SPANNER FOR NUTS
CLE À RACCORDS
LLAVE RACOR

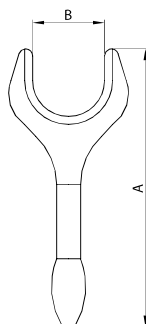
950 DS



DN	A	B	L	gr
25	255,0	55,0	25,0	330
38	255,0	55,0	25,0	330
51	255,0	55,0	25,0	330
63	255,0	55,0	25,0	330
76	255,0	55,0	25,0	330
101	255,0	55,0	25,0	330

CHIAVE PER RACCORDI
SPANNER FOR NUTS
CLE À RACCORDS
LLAVE RACOR

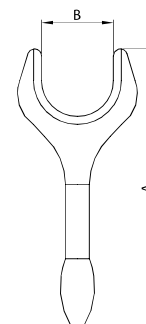
950 B



DN	A	B	gr
25	280,0	51,0	390
38	280,0	65,0	530
51	300,0	80,0	610
63	350,0	92,0	675
76	430,0	104,0	1.080
101	440,0	130,0	1.100

CHIAVE PER RACCORDI
SPANNER FOR NUTS
CLE À RACCORDS
LLAVE RACOR

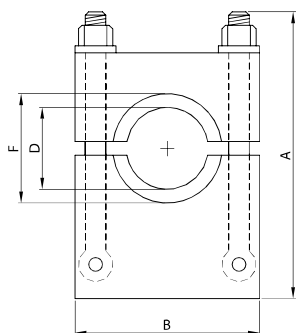
950 I



DN	A	B	gr
25	280,0	46,0	390
38	280,0	60,0	530
51	300,0	75,0	610
63	350,0	90,0	675
76	430,0	105,0	1.080
101	440,0	134,0	1.100

MORSA PER MR.
CLAMPING BLOCK FOR EG.
MACHOIRE À DR.
MORDAZA PARA MR.

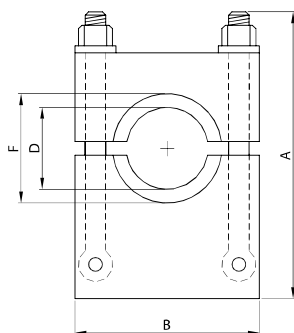
955 D



DN	A	B	D	F	gr
25	138,0	110,0	35,0	52,0	2.250
32	138,0	110,0	41,0	58,0	2.300
40	150,0	130,0	48,0	65,0	3.000
50	165,0	140,0	61,0	78,0	3.350
65	190,0	150,0	78,0	95,0	4.200
80	195,0	180,0	93,0	110,0	7.000
100	230,0	200,0	114,0	130,0	8.200

MORSA PER MR.
CLAMPING BLOCK FOR EG.
MACHOIRE À DR.
MORDAZA PARA MR.

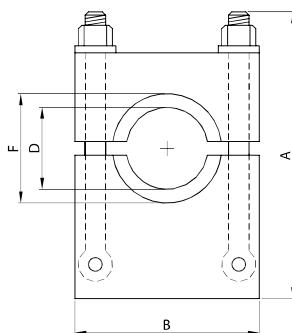
955 S



DN	A	B	D	F	gr
25	136,0	110,0	32,0	40,0	3.050
38	136,0	110,0	48,0	60,0	4.600
51	165,0	140,0	61,0	70,0	4.900
63	175,0	150,0	73,5	85,0	6.500
76	190,0	160,0	86,0	98,0	7.000
101	200,0	180,0	116,0	132,0	8.200

MORSA PER MR.
CLAMPING BLOCK FOR EG.
MACHOIRE À DR.
MORDAZA PARA MR.

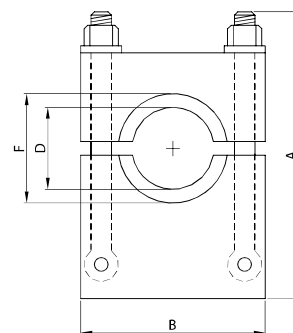
955 B



DN	A	B	D	F	gr
25	136,0	110,0	32,5	46,0	3.050
38	136,0	110,0	45,2	58,0	4.600
51	165,0	140,0	58,0	73,0	4.900
63	175,0	150,0	70,6	85,0	6.500
76	190,0	160,0	83,3	98,0	7.000
101	200,0	180,0	109,0	123,0	8.200

MORSA PER MR.
CLAMPING BLOCK FOR EG.
MACHOIRE À DR.
MORDAZA PARA MR.

955 I



DN	A	B	D	F	gr
25	136,0	110,0	29,0	37-8	3.050
38	136,0	110,0	42,5	50-8	4.600
51	165,0	140,0	56,0	64-8	4.900
63	175,0	150,0	69,7	77-8	6.500
76	190,0	160,0	82,3	91-8	7.000
101	200,0	180,0	108,4	118-8	8.200